

Challenging Stereotypes

Student Activity (SEND)



Even in the modern workplace, gender stereotypes are still common and there is occasionally an outdated opinion that certain job roles are better suited to either a man or a woman. Individuals can sometimes feel as though they are discouraged from choosing a certain career and made to feel like they will not be suited to a job role because of their gender.

Within this activity we will look at how we can challenge these stereotypes and begin to understand that someone's gender should never stop them being able to undertake a specific job role.

Section 1

Exploring Job Roles



Before we start this activity use the internet to research and write down the definition of the word "STEREOTYPE"

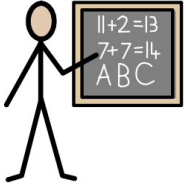


You might want to think about what a person might need to do to undertake this role, what skills and qualifications they might need and what type of person would be best suited for the role.

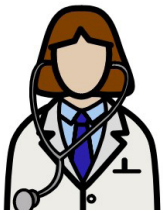
Please write some of your thoughts down in the text boxes next to the job roles on the next page.

Section 1 (continued)

Exploring Job Roles



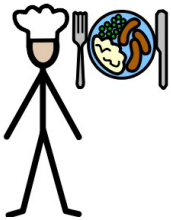
Teacher



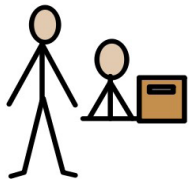
Doctor



Builder



Chef



Shop assistant

Section 2

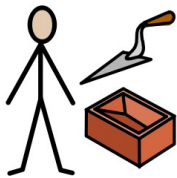
Who are the jobs best suited to?



Once again we have listed below a number of different jobs.

Can you discuss these job roles with an adult and decide which of these jobs are MALE jobs, FEMALE jobs or maybe could be undertaken by BOTH?

Once you have discussed these roles can you enter the names of the different job roles in the right area of the table on the next page.



Builder



IT Technician



Police Officer



Paramedic



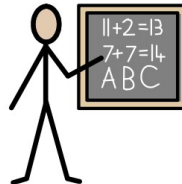
Cleaner



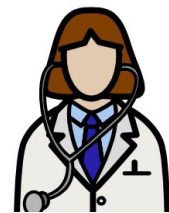
Bus Driver



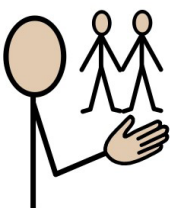
Hairdresser



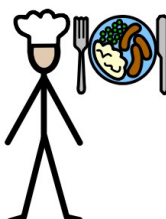
Teacher



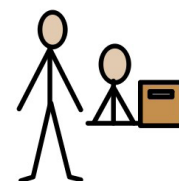
Doctor



Social Worker



Chef



Shop Assistant

Section 2 (continued)

Who are the jobs best suited to?



Can you write the job names listed on the previous page in the area of the chart below which you think it fits best?

Male

Both

Female

Section 3

Discuss and explain your opinions.



Now that you have explored the job roles and decided which gender they could be best suited to it is time for you to explain why you placed each of the job roles within the different areas.

Working with an adult can you discuss and answer the following questions.

Question 1

Why did you associate the job roles with the gender that you did?

Pick 2 x job roles and list your reasons why.

Question 2

What skills and qualities do you think each gender possesses to make them good at the associated job roles?

Pick a DIFFERENT 2 x Job Roles and list the skills and qualities.

Question 3

Are your opinions based on your own thoughts or have they been influenced by the thoughts and comments of others, such as your friends, your family or your teacher?

Question 4

Looking into the future, do you think that people's opinions will change or remain the same?

Please explain why?

Section 4

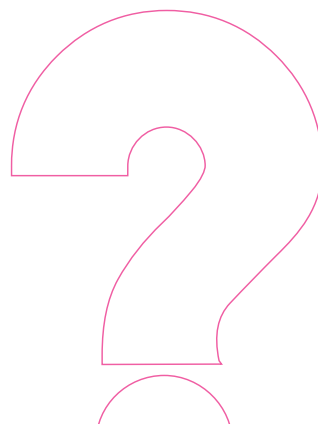
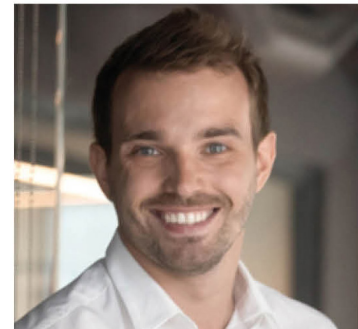
Discuss and explain your opinions.



In this next section we will look at some real people undertaking real jobs here in Worcestershire.

Please look at the photos below.

Using the list of job roles, you discussed in section 1 can you try to match each of these people to their correct job role.



Section 4 (continued)

are you ready for the answers?



Doctor



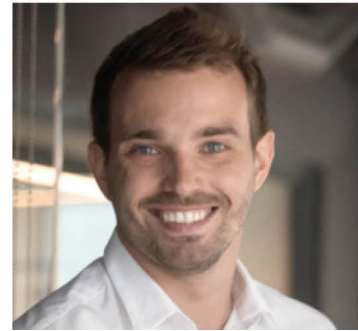
Teacher



Shop assistant



Chef



Builder



With an adult can you discuss the following.

How accurate were your thoughts?

Were there any of the real people undertaking jobs that surprised you?

Why do you think that was?

Section 5

Reflection...



With an adult can you discuss the following and then answer the following questions and put your answers within the FREE text boxes below.

Question 1

How do you feel knowing that some people think that your gender allows or doesn't allow you to pursue certain job roles?

Question 2

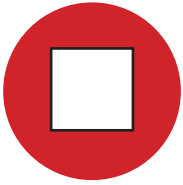
Do you agree with these people?
Explain how you could possibly change their opinion?

Question 3

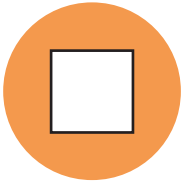
Have your thoughts about gender stereotypes changed from the beginning of this activity?
Explain how?

Student Feedback

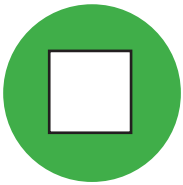
How would you describe your learning in this lesson?



I don't understand the learning in this lesson



It's not easy but I am beginning to understand



I really understand the lesson

Formal Teacher / Teaching Assistant Notes:

Staff Name

Date

Support Required (Tick Box as appropriate)

Independent Physical Verbal One to One Scribe

Explanation of Support